

# Yisnechu

Shabbat morning Amidah

Music by  
KEN CHASEN and JOSH ZWEIBACK

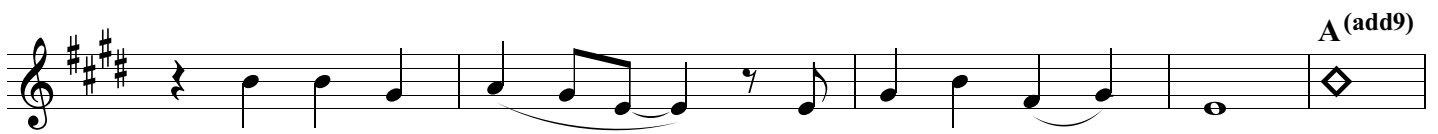
♩ = 126 **Rock Feel**

(A Cappella)

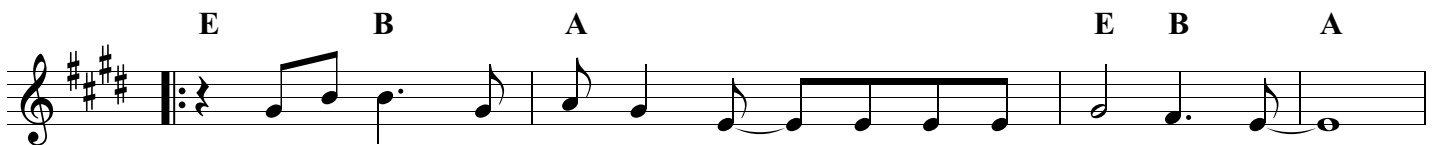
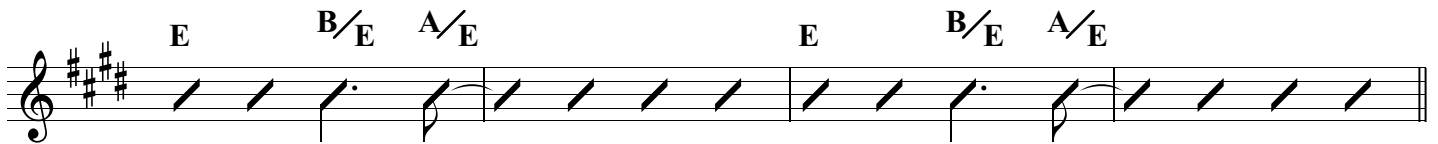


Yis-me-chu v' - mal-chut' - cha \_\_ shom-rei shab - bat. \_\_\_\_\_

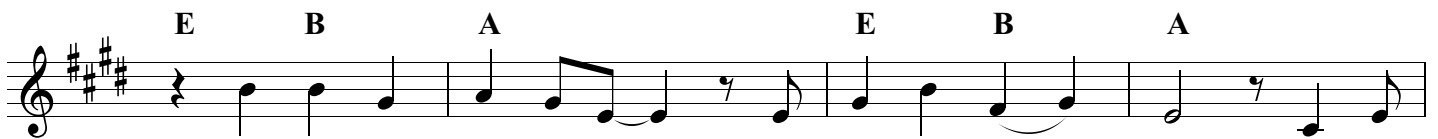
(End A Cappella)



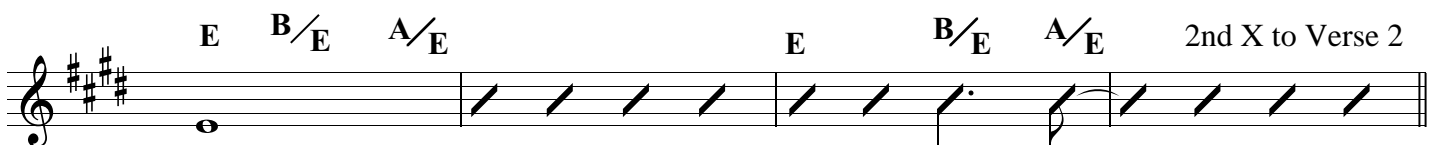
Shom - rei shab - bat \_\_\_\_\_ v' - ko - rei o - neg.



Yis-me-chu v' - mal-chut' - cha \_\_ shom-rei shab - bat. \_\_\_\_\_



Shom - rei shab - bat \_\_\_\_\_ v' - ko - rei o - neg, yis - me -



chu.

G<sup>6</sup> A G<sup>6</sup> A

Am m' - ka - d' - shei \_\_\_\_\_ m' - ka - d' - shei \_\_ sh' - vi' - i, \_\_\_\_\_

C<sup>#mi</sup> F<sup>#</sup> F<sup>#mi</sup> B<sup>sus</sup>

ku - lam yis - b' - u \_\_\_\_\_ v' - yit - an - gu \_\_ mi - tu - veh - cha. \_\_\_\_\_

**VERSE 2**

G<sup>6</sup> A G<sup>6</sup>

V' - hash' - vi - i ra - tzi - ta - bo \_\_\_\_\_ v' - ki - dash - to. \_\_\_\_\_

A C<sup>#mi</sup> F<sup>#</sup>

\_\_\_\_\_ Chem - dat \_\_\_\_\_ ya - mim \_\_\_\_\_

F<sup>#mi</sup> B<sup>sus</sup>

o - to \_\_\_\_\_ ka - ra - ta, \_\_\_\_\_

**(INSTRUMENTAL)**

G A G A

G A G A

C#mi F# C#mi F#

(End instrumental)

F#mi7 B F#mi G#mi A B

E B/E A/E E B/E A/E

Zei-cher l'-ma' - a - sei\_\_ v'-rei - sheet \_\_\_\_\_

E B/E A/E E B/E A/E

Zei - cher l' - ma' - a - sei\_\_ v' - rei - sheet \_\_\_\_\_

E B A E B A

Yis-me-chu b' - mal-chut'-cha\_\_ shom-rei shab - bat. \_\_\_\_\_

E B A E B 1. A

Shom-rei shab - bat \_\_\_\_\_ v' - ko - rei o neg.

2. A E B A

neg. (Yis - me - - chu) Yis - me - chu v' - mal-chut' - cha \_\_\_\_\_ (Yis - me - -

E B A E B A

shom-rei shab - bat \_\_\_\_\_ Yis-me-chu v' - mal-chut'cha \_

chu) (Yis - me - chu) (Yis - me -

E B A E B A

shom-rei shab - bat \_\_\_\_\_ Yis - me - chu \_\_\_\_\_ Yis - me -

chu)

E B A E B A

chu \_\_\_\_\_ Yis - me - chu \_\_\_\_\_ Yis - me -

E B A E B A

chu \_\_\_\_\_